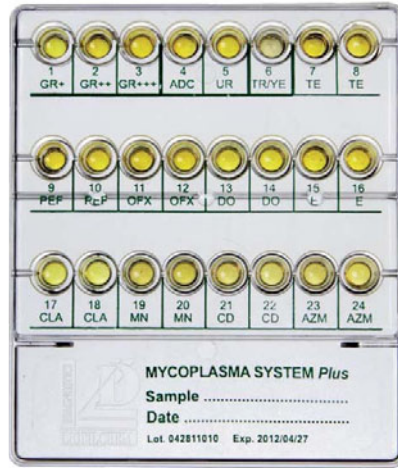


Mycoplasma System Plus

System for detection, count and susceptibility testing of Urogenital Mycoplasmas/Ureaplasmas

DIRECT INOCULATION FROM THE SPECIMEN SUSPENSION, NO ENRICHMENT BROTH



**RESULTS IN 24-48 HOURS INCUBATION AT 36±1 °C
INEXPENSIVE, EASY TO USE, INSTRUMENTS FREE**

Urogenital Mycoplasmas

COUNT

<10⁴ CFU/mL

Low growth of mycoplasmas is shown by colour change of well: **1-GR+** from yellow to red



<10⁵ CFU/mL

Moderate growth of mycoplasmas is shown by colour change of wells: **1-GR+, 2-GR++** from yellow to red



>10⁵ CFU/mL

High growth of mycoplasmas is shown by colour change of wells: **1-GR+, 2-GR++, 3-GR+++** from yellow to red



DETECTION

Mycoplasma hominis

The presence of **Mycoplasma hominis** is shown by colour change of well: **4-ADC** from yellow to red



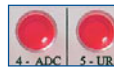
Ureaplasma urealyticum

The presence of **Ureaplasma urealyticum** is shown by colour change of well: **5-UR** from yellow to red

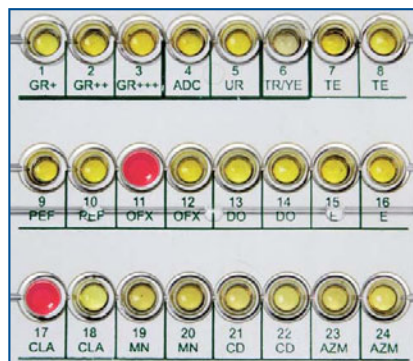


Mycoplasma hominis and Ureaplasma urealyticum

The presence of **Mycoplasma hominis** and **Ureaplasma urealyticum** is shown by colour change of wells: **4-ADC and 5-UR** from yellow to red



SUSCEPTIBILITY TESTING



The **Sensitivity** to antibiotics is shown by the colour of wells: **yellow**



The **Intermediate sensitivity** to antibiotic is shown by colour change of wells: **from yellow to orange**



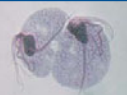
The **Resistance** to antibiotic is shown by colour change of wells: **from yellow to red**



Protozoa and Yeasts

Trichomonas vaginalis / Yeasts

Look for mobile ciliated trophozoites, chlamydozoites and hyphae under microscopic observation (40x).



Trichomonas vaginalis trophozoite.



Candida albicans chlamydozoites and hyphae

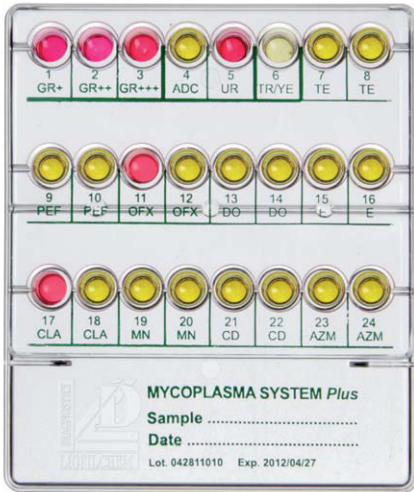
TEST PROCEDURE

Code 72592

20 test

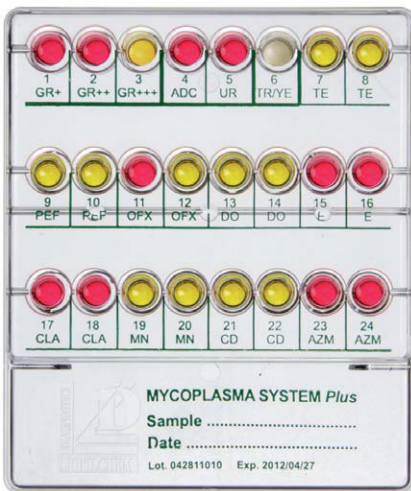
EXAMPLE OF RESULTS

1



Sample of vaginal swab with presence of ***Ureaplasma urealyticum*** (5-UR) with growth +++ ($>10^5$ CFU/mL).
Susceptibility testing of mycoplasmas:
 11-OFX, 17-CLA = **Resistant**

2



Sample of vaginal swab with presence of ***Mycoplasma hominis*** (4-ADC) ***Ureaplasma urealyticum*** (5-UR) with growth ++ ($10^4 - 10^5$ CFU/mL)
Susceptibility testing of mycoplasmas:
 11-OFX, 15-E, 16-E, 17-CLA, 18-CLA, 23-AZM = **Resistant**
 24-AZM = **Intermediate sensitivity**

